

# Census 2020: Preliminary Results

## NJTPA Regional Transportation Advisory Committee Meeting

October 12, 2021



Robert Diogo

**North Jersey Transportation Planning Authority**

# 2020 Census: Redistricting Data

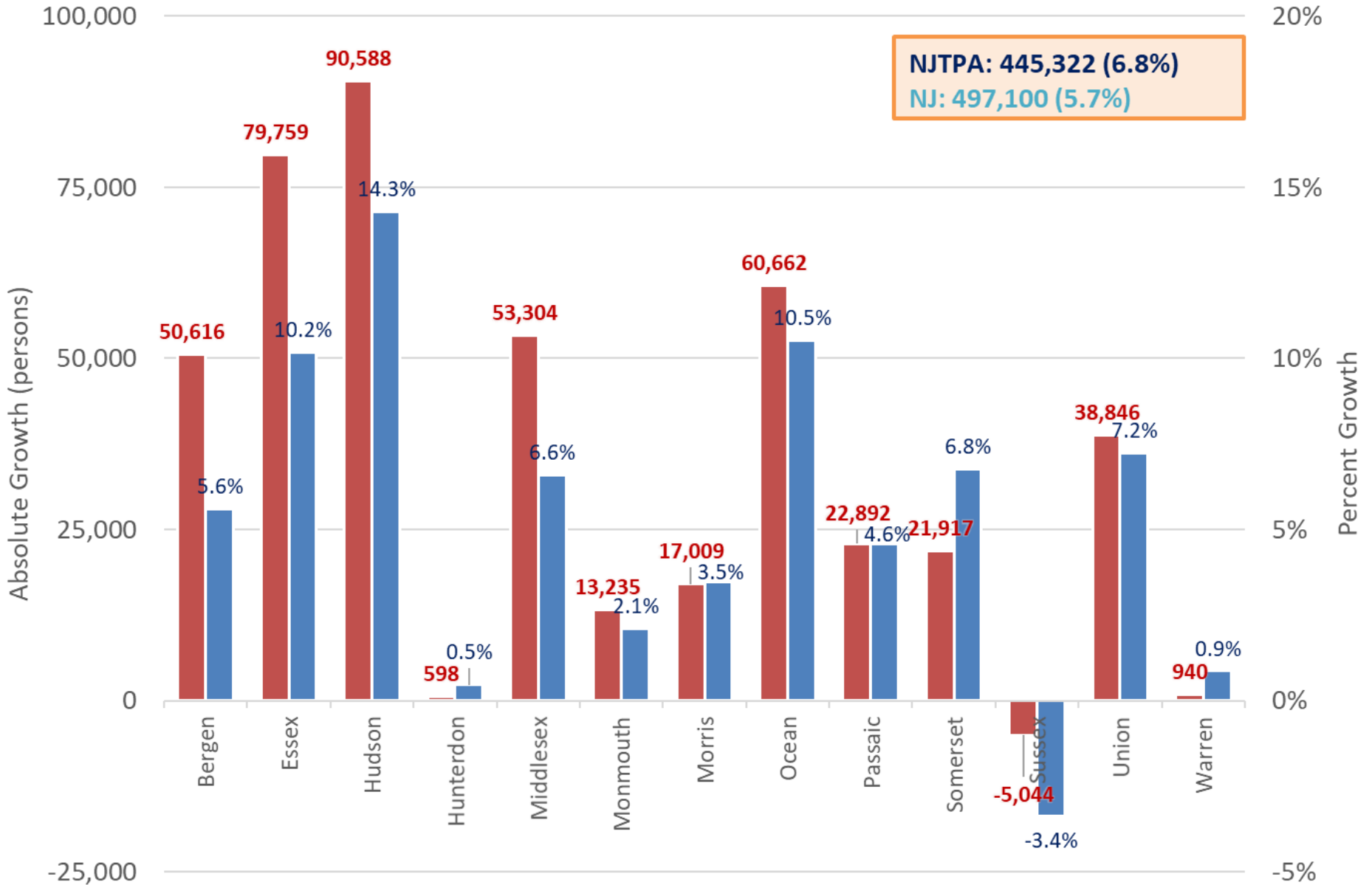
- Released August 12<sup>th</sup>
- Data:
  - Population
  - Racial/ethnicity mix
  - Age breakdown over 18/under 18
  - Occupied/Vacant Housing Units
- Additional Census 2020 data released 2022

# Census 2020: Interpreting Results

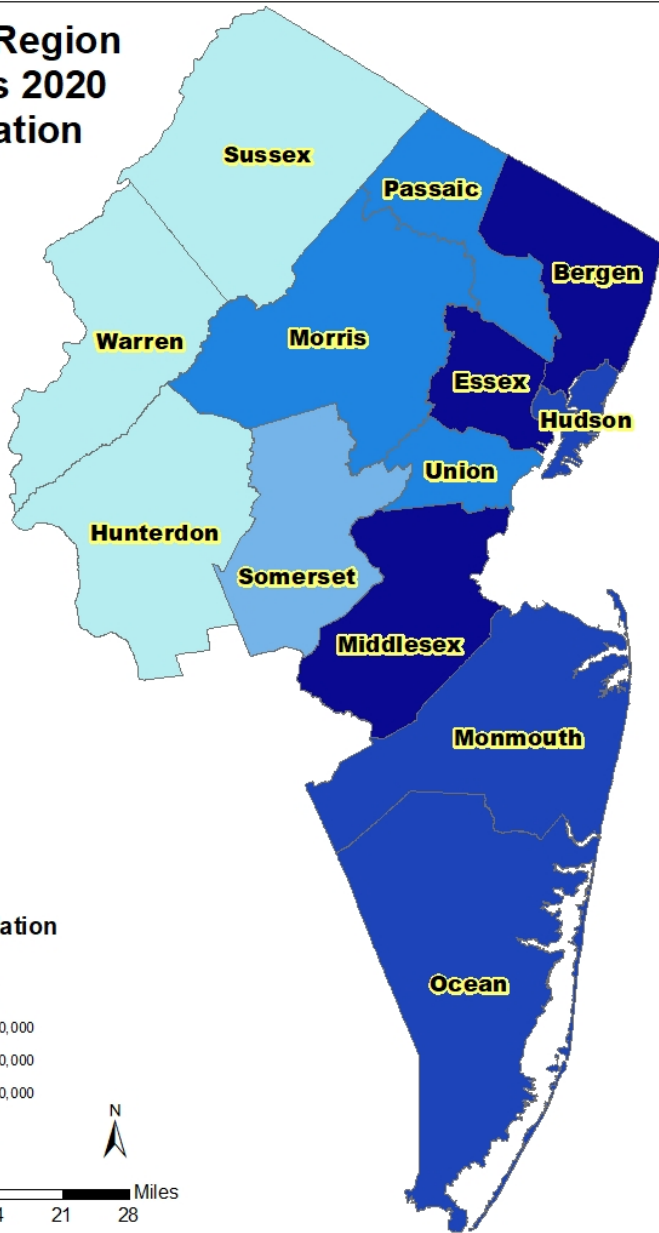
- Other Census Products
  - American Community Survey (ACS) (2020 “experimental estimates”)
  - Population Estimates Program
  - Public Use Microdata Areas (PUMAs)
- Collection during pandemic
- Comparison to 2010

# Growth from Census 2010 to Census 2020

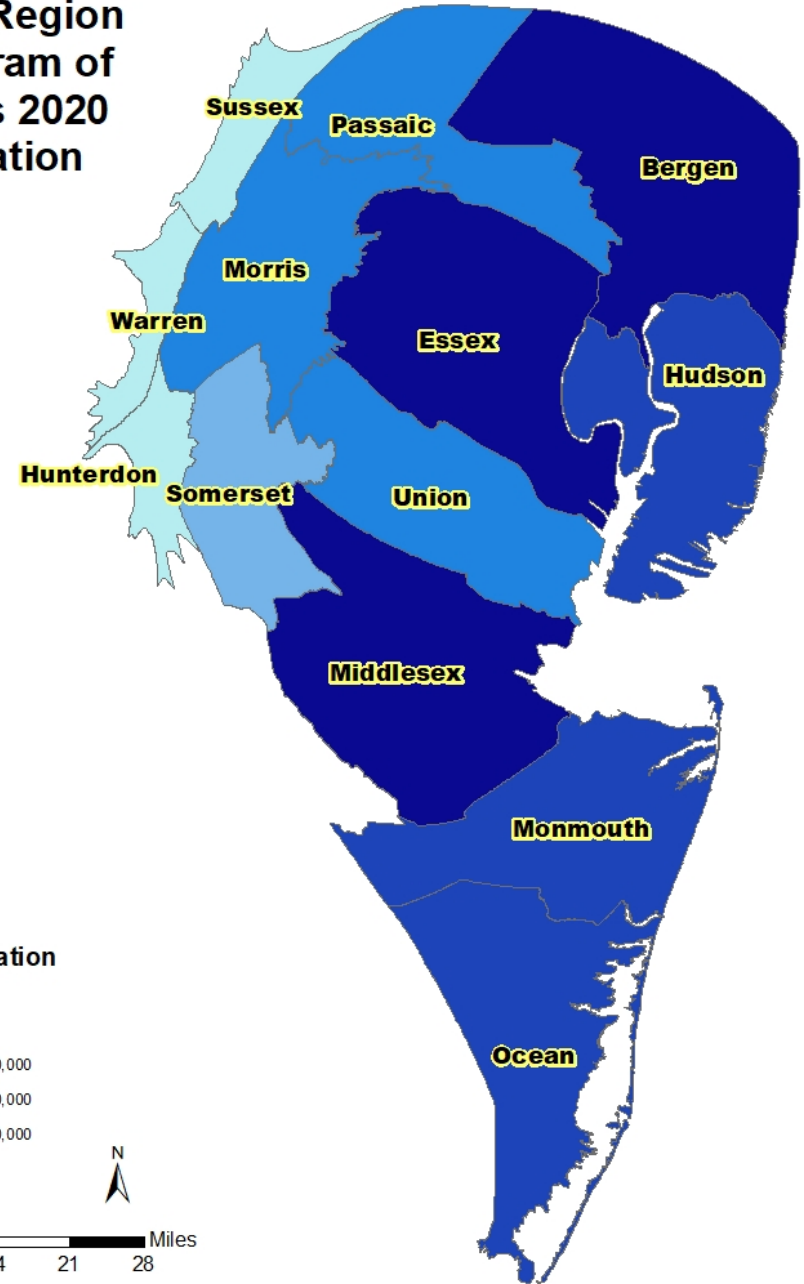
■ Absolute Growth ■ Percent Growth



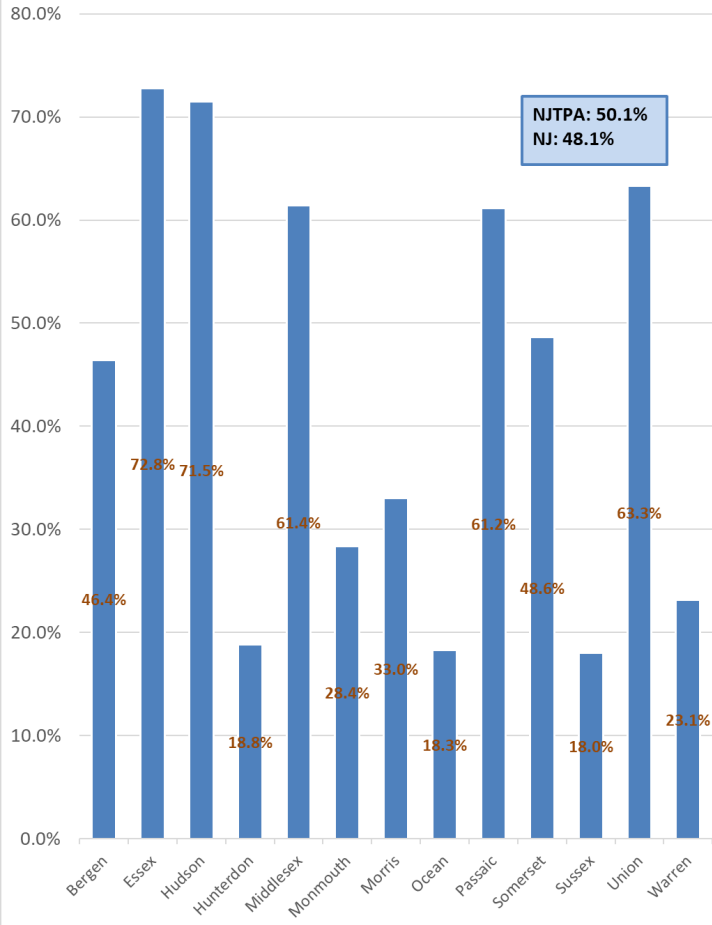
# NJTPA Region Census 2020 Population



# NJTPA Region Cartogram of Census 2020 Population

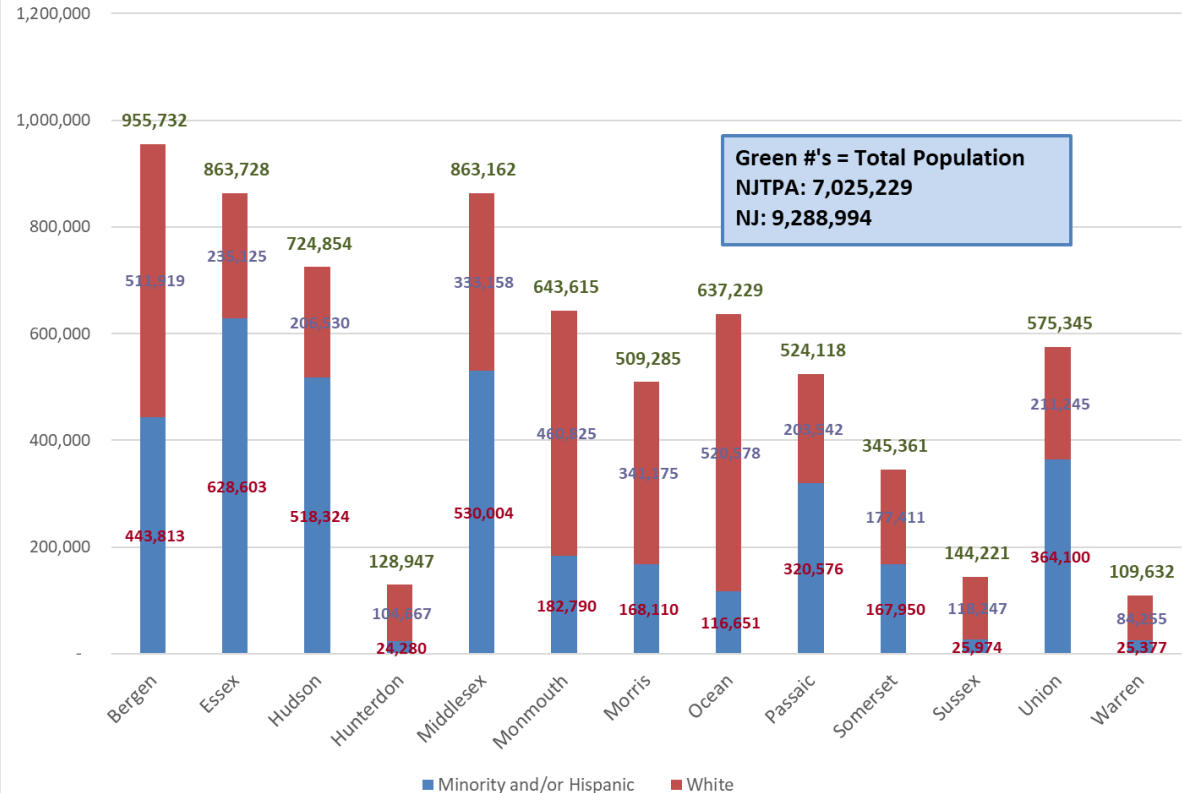


Census 2020: Percent Population Minority and/or Hispanic



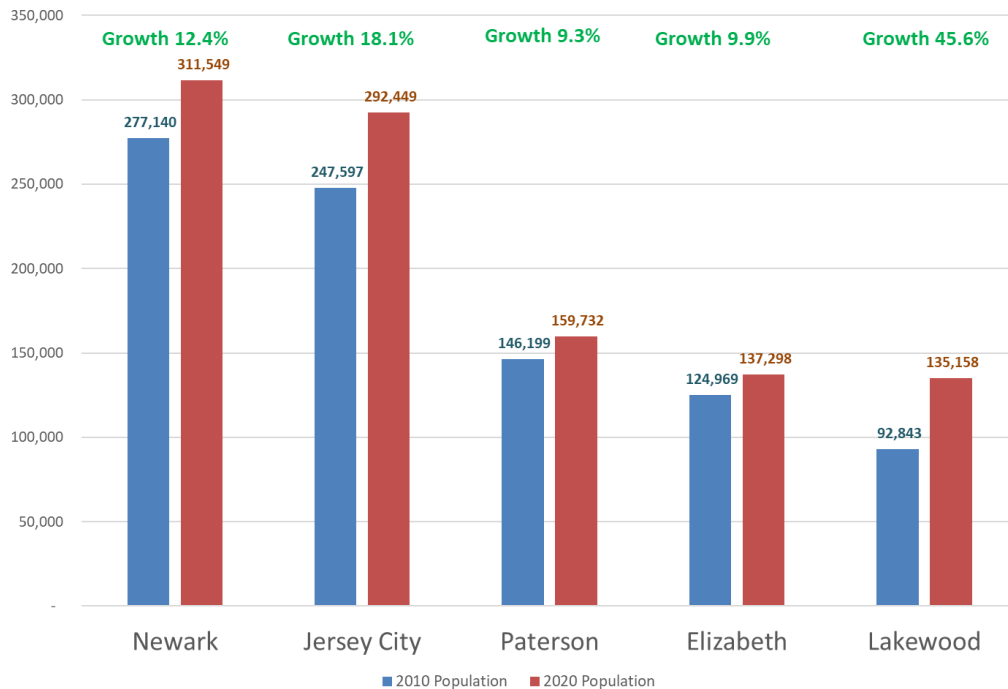
# Minority Population

Census 2020: Population Minority and/or Hispanic



# Municipal Population Growth

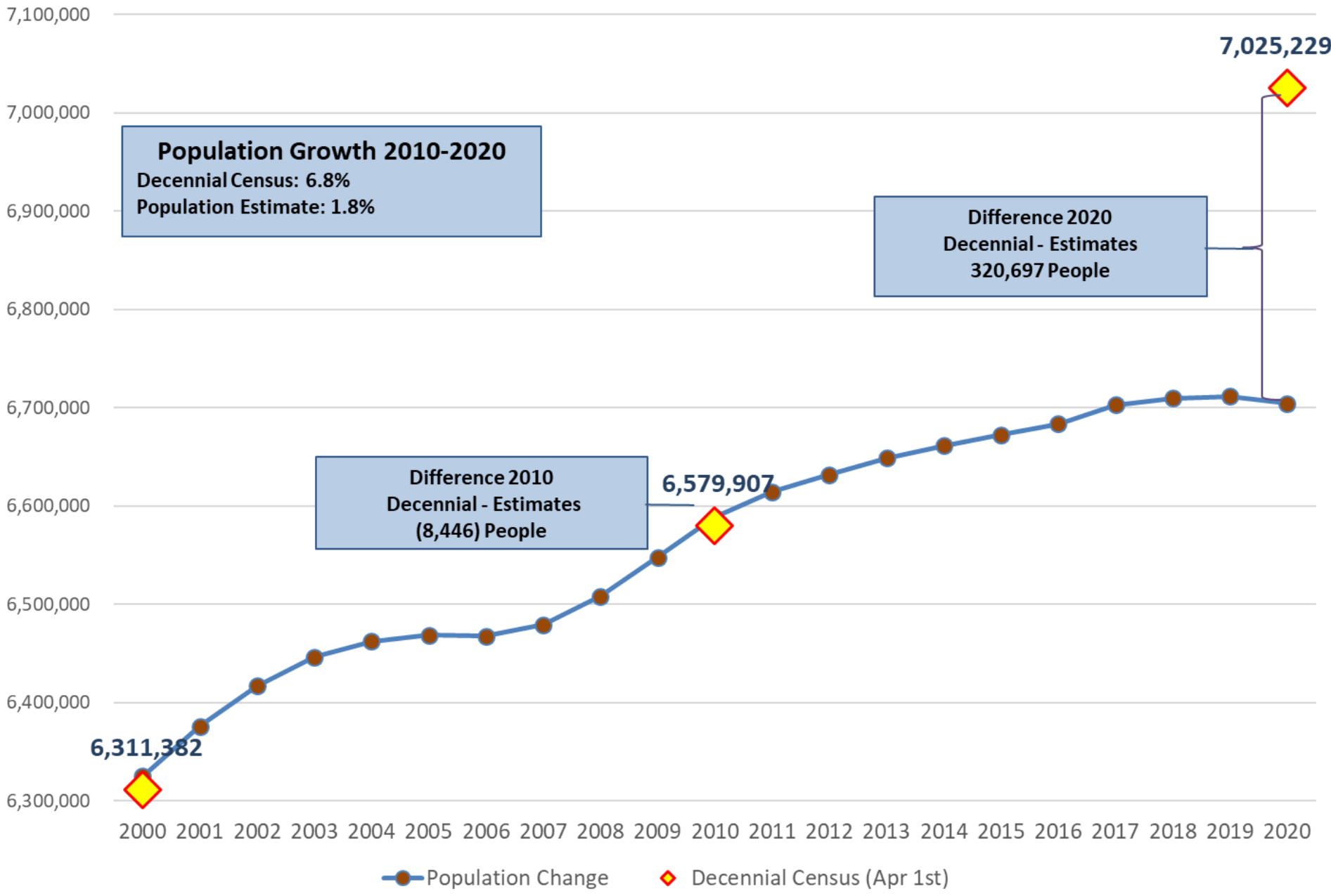
Census 2020: Five Top Municipalities in Population NJTPA Region



County	Municipality	Population Change Census 2010-2020
Hudson	Jersey City	44,852
Ocean	Lakewood township	42,315
Essex	Newark city	34,409
Passaic	Paterson city	13,533
Union	Elizabeth city	12,329
Hudson	Hoboken city	10,414
Middlesex	Monroe township	9,462
Hudson	Bayonne city	8,662
Middlesex	Edison township	7,621
Essex	Irvington township	7,250
Passaic	Clifton city	6,160
Somerset	Franklin township	6,064
Hudson	Secaucus town	5,917
Hudson	Harrison town	5,830
Essex	Bloomfield township	5,790

County	Municipality	Population Percentage Change Census 2010-2020
Ocean	Lakewood township	45.6%
Hudson	Harrison town	42.8%
Hudson	Weehawken township	37.0%
Hudson	Secaucus town	36.4%
Bergen	Wood-Ridge borough	32.9%
Monmouth	Englishtown borough	27.0%
Bergen	Edgewater borough	24.5%
Middlesex	Monroe township	24.2%
Warren	Allamuchy township	23.4%
Hunterdon	Lebanon borough	22.6%
Hudson	Hoboken city	20.8%
Monmouth	Deal borough	20.0%
Hudson	Jersey City	18.1%
Morris	Mount Arlington borough	17.0%
Ocean	Barnegat township	16.0%

# NJTPA Region: Decennial Census vs Census Population Estimates



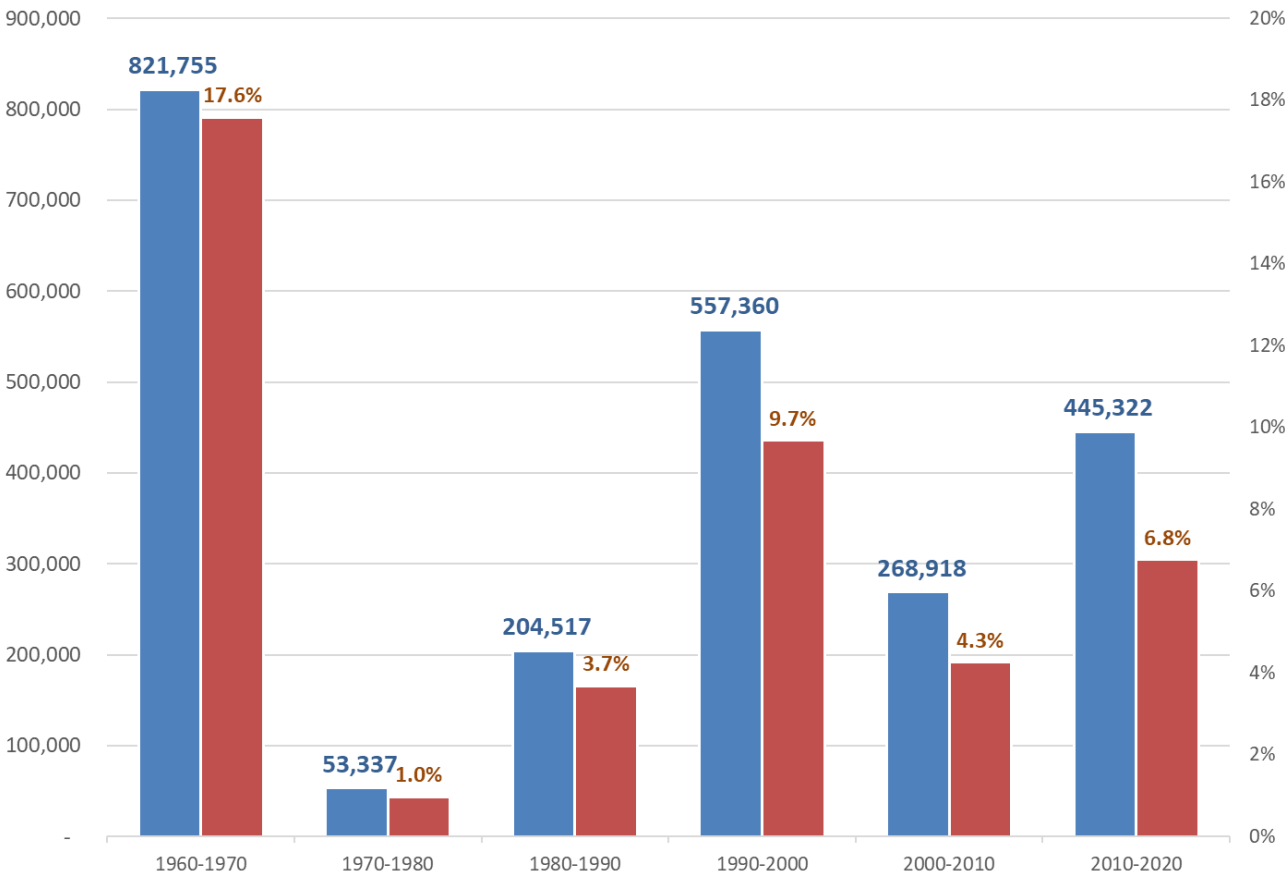


# Population Changes

## *Why New York State's Population Growth Surprised Experts*

The details of how and where the census counts can make a big difference.

Historical Population Changes Decennial Census Data NJTPA Region



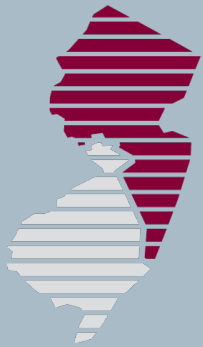
Year	Total Population NJTPA Region
1960	4,674,020
1970	5,495,775
1980	5,549,112
1990	5,753,629
2000	6,310,989
2010	6,579,907
2020	7,025,229

# NJTPA Uses of Census Data

- Funding Formulas
- Planning Studies
- Needs Assessments
- Modeling and Forecasting
- Equity Analysis
- ...

# Thank You!

*Defining the Vision. Shaping the Future.*



# NJTPA

**NORTH JERSEY  
TRANSPORTATION  
PLANNING AUTHORITY**

**Robert Diogo**

diogo@njtpa.org

973-639-8409



Find us on  
**Facebook!**

follow us on

**twitter** 



Find Us On  
**Instagram**

You  
Tube

**SUBSCRIBE**  
TO OUR CHANNEL