

TMA TECHNICAL ASSISTANCE

Speed Study
Lakewood, NJ | May - July 2022

Greater Mercer TMA
www.gmtma.org | (609) 452-1491
15 Roszel Rd. South, Suite 101
Princeton, NJ 08540



Table 5 - Current Student Distance From School		
	Number of Students	% of Students
Less than 1/4 Mile	22	6%
Between 1/4 mile and 1/2 mile	30	8%
Between 1/2 mile and 1 mile	64	17%
Greater than 1 mile	255	69%

TMA UPDATE

TMA Technical Assistance

1. Pedestrian Safety Audits and Bikeability Assessments
2. Speed Studies
3. Complete Streets Support
4. Environmental-related Technical Assistance
5. Additional Support



Radio Rd Pedestrian Road Safety Audit

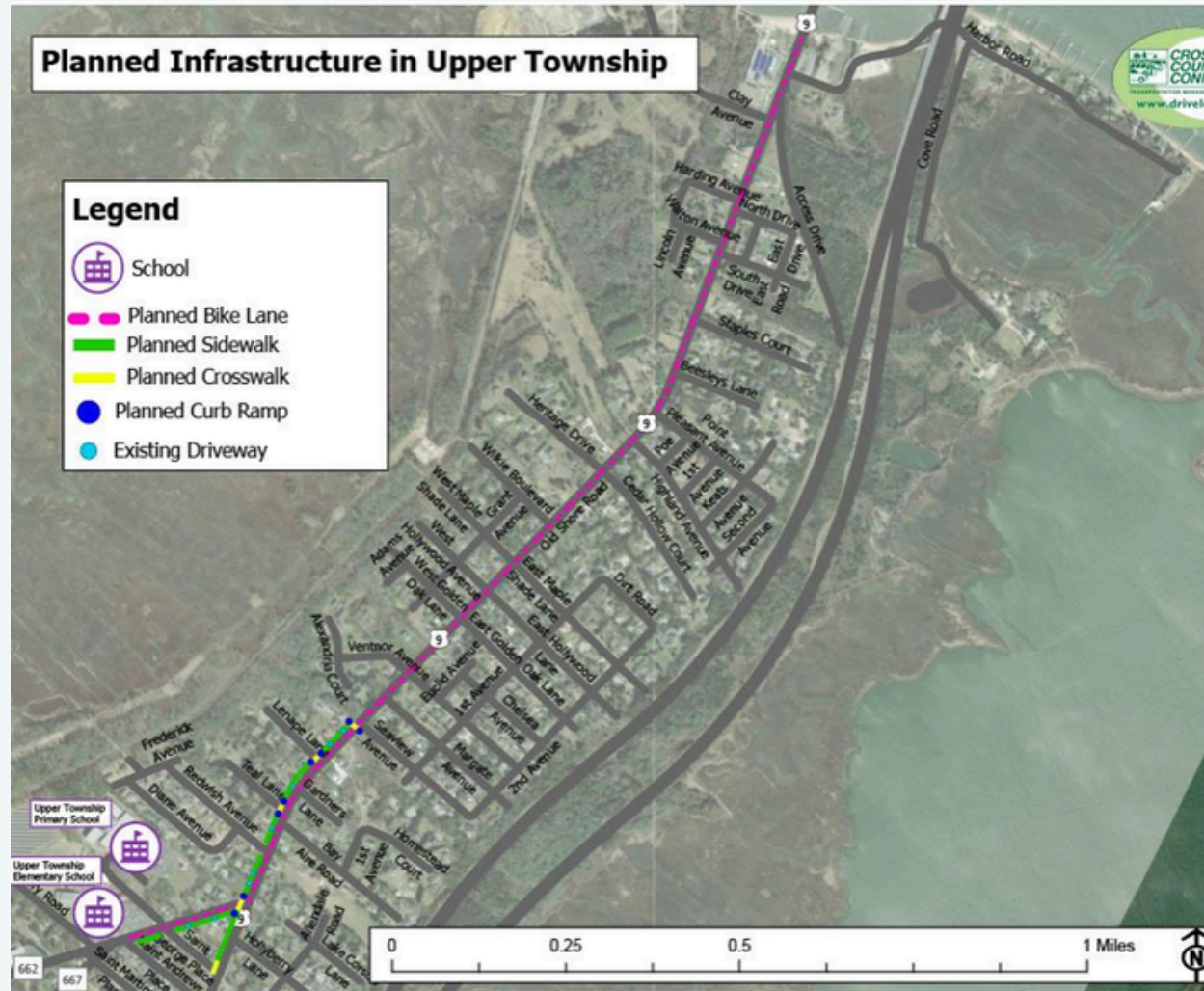
Little Egg Harbor, Ocean County, NJ



Pedestrian Safety Audits and Bikeability Assessments

SMALL-SCALE- INTERSECTIONS/SIDEWALK SEGMENTS
 LARGE SCALE- CORRIDORS, NEIGHBORHOODS, DOWNTOWNS

- Conduct on-site assessments
- Identify key pedestrian and/or bicyclist safety risks
- Analyze crash data to support data-driven decisions
- Identify recommendations to improve safety and walkability/bikeability
- Prepare PSA and/or School Travel Plan report



SUMMARY OF INFRASTRUCTURE AND NON-INFRASTRUCTURE RECOMMENDATIONS

The recommendations in this travel plan are intended to increase safety for students on their walk or bike ride to and from school and when appropriate, encourage more students to walk or bike. The table below identifies those actions and a cost estimate. Cost estimates are for planning purposes only – a professional engineer should prepare the actual estimates used for grant application. These estimates were prepared using the NJDOT Transportation Alternatives Program 2024 Cost Estimate Guidelines And Recommendations For Pedestrian, Bicycle And Traffic Calming Projects. The estimated costs shown here have been escalated 5% per year for two years (2024 - 2026), and include a 30% allowance on top of construction costs for design fees. No costs are included for Maintenance and Protection of Traffic, Right-of-Way costs or Utility Relocation costs.

Table 7 - Summary of Recommendations				
ID	Recommendation	Category/Location	Type	Estimated Cost
1	Install 4,833 linear feet of new off-road shared-use paths to better connect the neighborhood to Stony Brook Elementary School	Side-paths	Infrastructure	NA
2	Add 3 Inverted U style bike racks near south entrance of Stony Brook Elementary School	Bike-racks	Infrastructure	\$1,504
3	Add high-visibility crosswalks at T-intersections along the major roads of Stephenson Road (add 3), Denow Road (add 4), and Van Brunt Road (add 4), total 11	Crosswalks	Infrastructure	\$47,297
4	Add curb ramps to all new crosswalk locations, total 22	Crosswalks	Infrastructure	\$63,063
5	Add detectable surfaces to all new crosswalk locations, total 22	Crosswalks	Infrastructure	\$11,036
6	Evaluate current lighting at crosswalk locations and add pedestrian scale lighting where necessary	Lighting	Infrastructure	NA
7	Add raised crosswalks, total 8	Stephenson Road	Infrastructure	\$114,660
8	Add 4 speed humps	Stephenson Road	Infrastructure	\$57,330
9	Add curb extensions at all speed hump and raised crosswalk locations, no storm drain modification required, total 16	Stephenson Road	Infrastructure	\$183,456
10	Add curb extensions at all speed hump and raised crosswalk locations, storm drain modification required, total 6	Stephenson Road	Infrastructure	\$214,987
11	Add lane striping to reduce travel lanes to 11', while bike lanes are not recommended, striping should be done in a way that accommodates	Stephenson Road	Infrastructure	NA

Speed Study Programs



SPEED STUDIES

Enforcement Prioritization

**Safe Routes to School
Programs**

**Technical Assistance
Applications**

**Pre/Post
Community Education
Campaign Evaluation**

**Complete Streets
Demonstration Projects**

**Respond to Resident
Concerns**

**In Support of Local Safety
Action Plans**

Traffic Counts

Setting Speed Limits

COMPLETE STREETS SUPPORT

- Resolutions and Ordinances
- Demonstration Projects



ENVIRONMENTAL-RELATED TECHNICAL ASSISTANCE

- Air Quality Monitoring
- EV Readiness Planning

EV ADOPTION LEADER WORKSITE CERTIFICATION

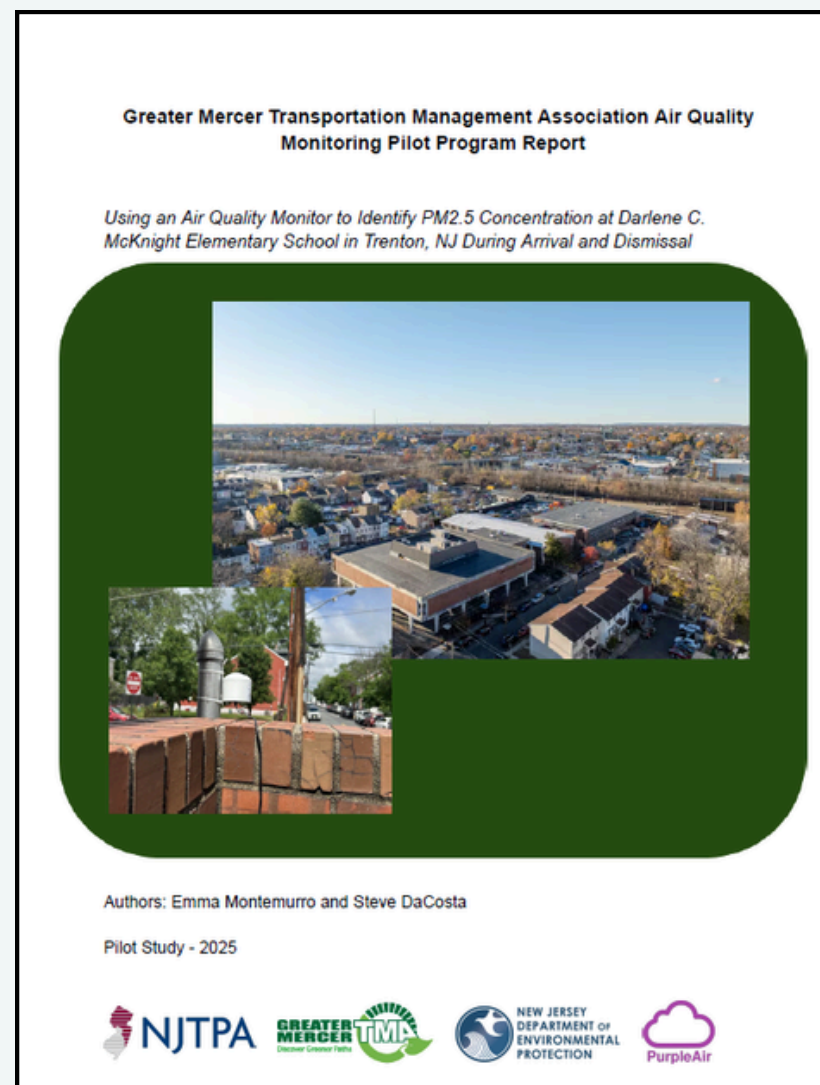


Figure 3. Air Quality Monitor Placement Close Up - Front of School.



EV FIRST RESPONDER AWARENESS

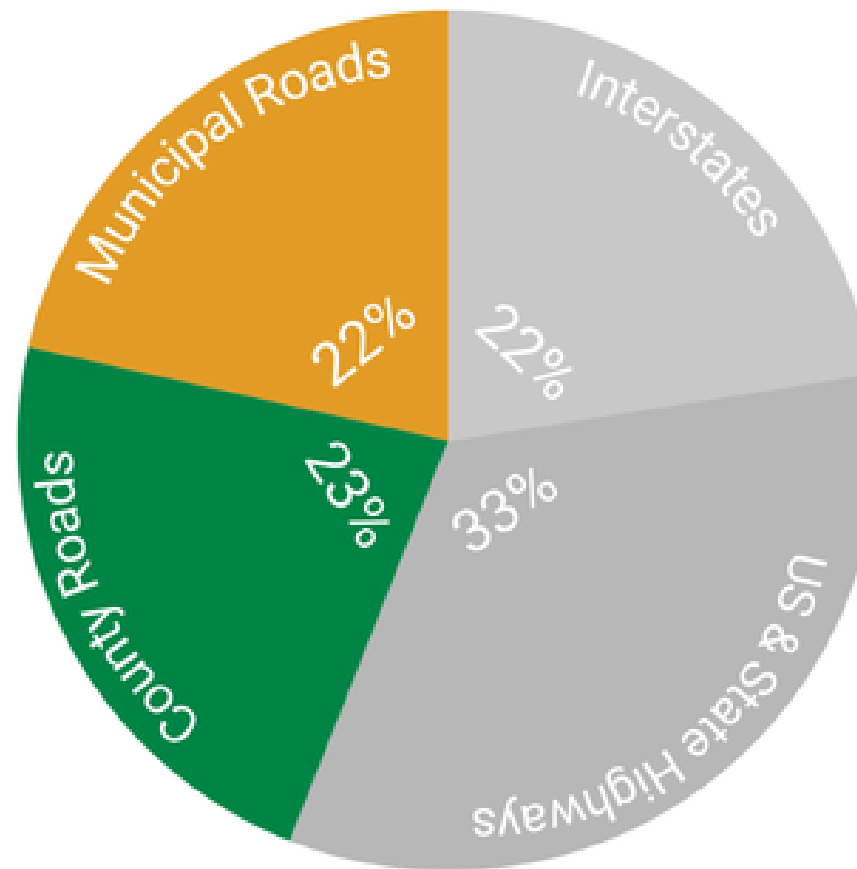
Additional Support

- Crash Data Analysis Support
- Mapping Tools
- GFTS
- TDM Technical Assistance
- General Grant Application Assistance

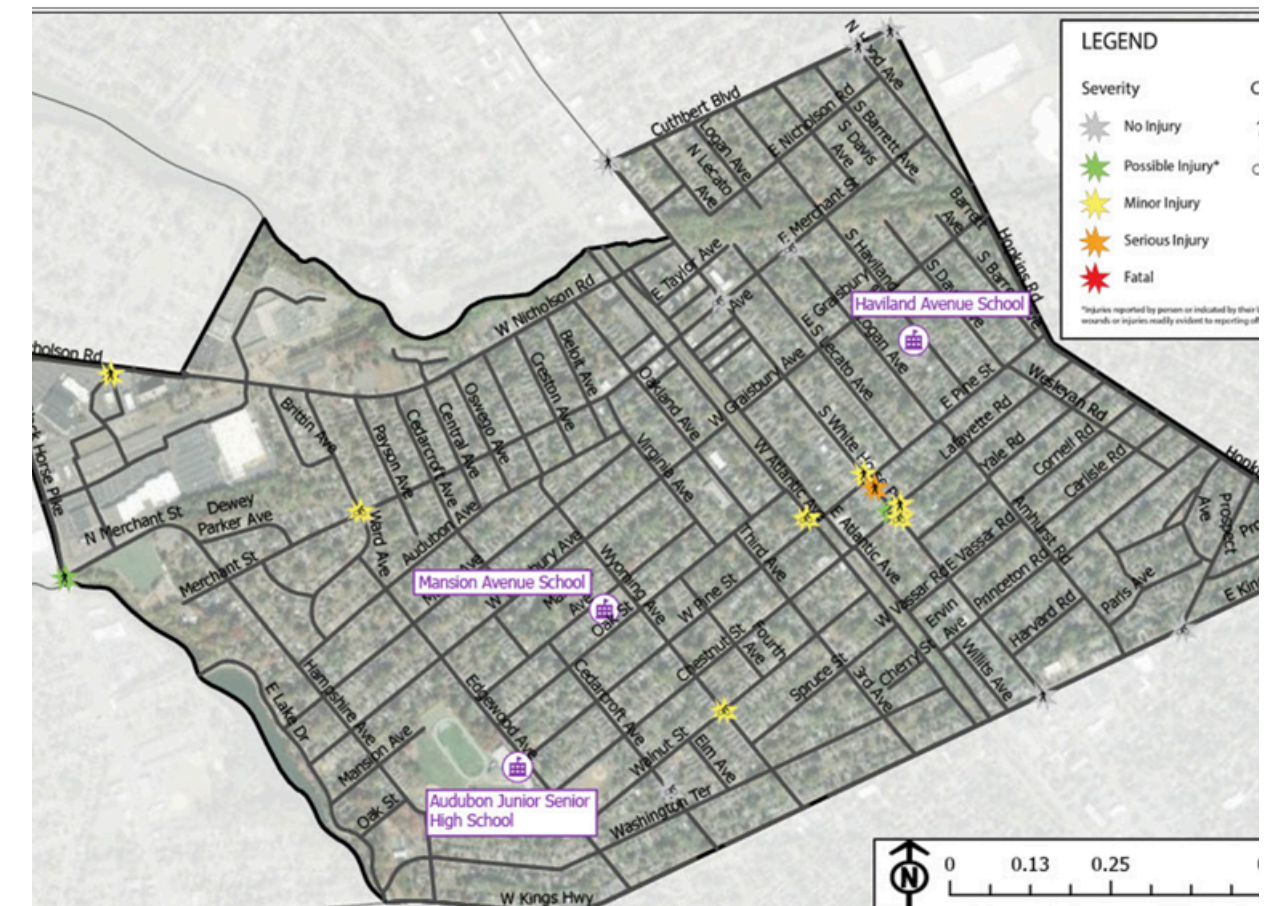
Crash Data Analysis



Percent of fatalities and severe injuries by road type



Crash data for Mercer County, 2017-2021



GIS AND MAPPING TOOLS

Mapping Tools for the Public and Organizations working with Clients in Need of Transportation



Search for Food Pantries by Bus Line
 I want to see food pantries along NJ Transit Route:
 0 Selected

Search by Day of the Week
 I want to see Food Pantries that are open on:
 0 Selected

Show Me Food Pantries within Access Link Service Area

Food Pantries	More Information	Description of and...	Address
Pearson Memorial United ...	View	Distribution of fresh groce...	71 Pears
RISE	View	Monday, Wednesday, Frid...	133 Bro
A.M.E.N (A Meal Encourag...	View	Last Sunday of the month. ...	81 Belle

Map It Tool
 Home > Map It Tool

Starting Location
 SEARCH BY ADDRESS, CITY OR ZIP
 morris county
 RANGE: 10 Miles
 Search

Map It Suggestions And Help

Bus Routes


WARREN COUNTY	PASSAIC COUNTY	SUSSEX COUNTY	MORRIS COUNTY	ESSEX COUNTY	UNION COUNTY
<input type="checkbox"/> Boxcar Morris Meteor	<input type="checkbox"/> Colonial Coach Bus Stops	<input type="checkbox"/> LAKELAND 46	<input type="checkbox"/> NJ TRANSIT #194		
<input type="checkbox"/> NJ TRANSIT #29	<input checked="" type="checkbox"/> NJ TRANSIT #73	<input type="checkbox"/> NJ TRANSIT #871	<input type="checkbox"/> NJ TRANSIT #872		
<input type="checkbox"/> NJ TRANSIT #875	<input type="checkbox"/> NJ TRANSIT #878	<input type="checkbox"/> NJ TRANSIT #880	<input type="checkbox"/> Parsippany Transit System: Route 1		

GTFS for JARC and Local Bus Services

B1, B2, B5


B1

BEVERLY - PEMBERTON




A DEVIATED ROUTE SERVICE

SERVING THE GENERAL PUBLIC IN:
Beverly, Edgewater Park, Willingboro, Westampton,
Lumberton, Mt. Holly, Hainesport, Eastampton,
and Pemberton
Connecting service to BurLink B2, NJ TRANSIT 317,
409, 413, 418 and the River LINE




Service Hours
Monday-Friday
6:40AM - 11:50 AM
12:40 PM - 7:50 PM

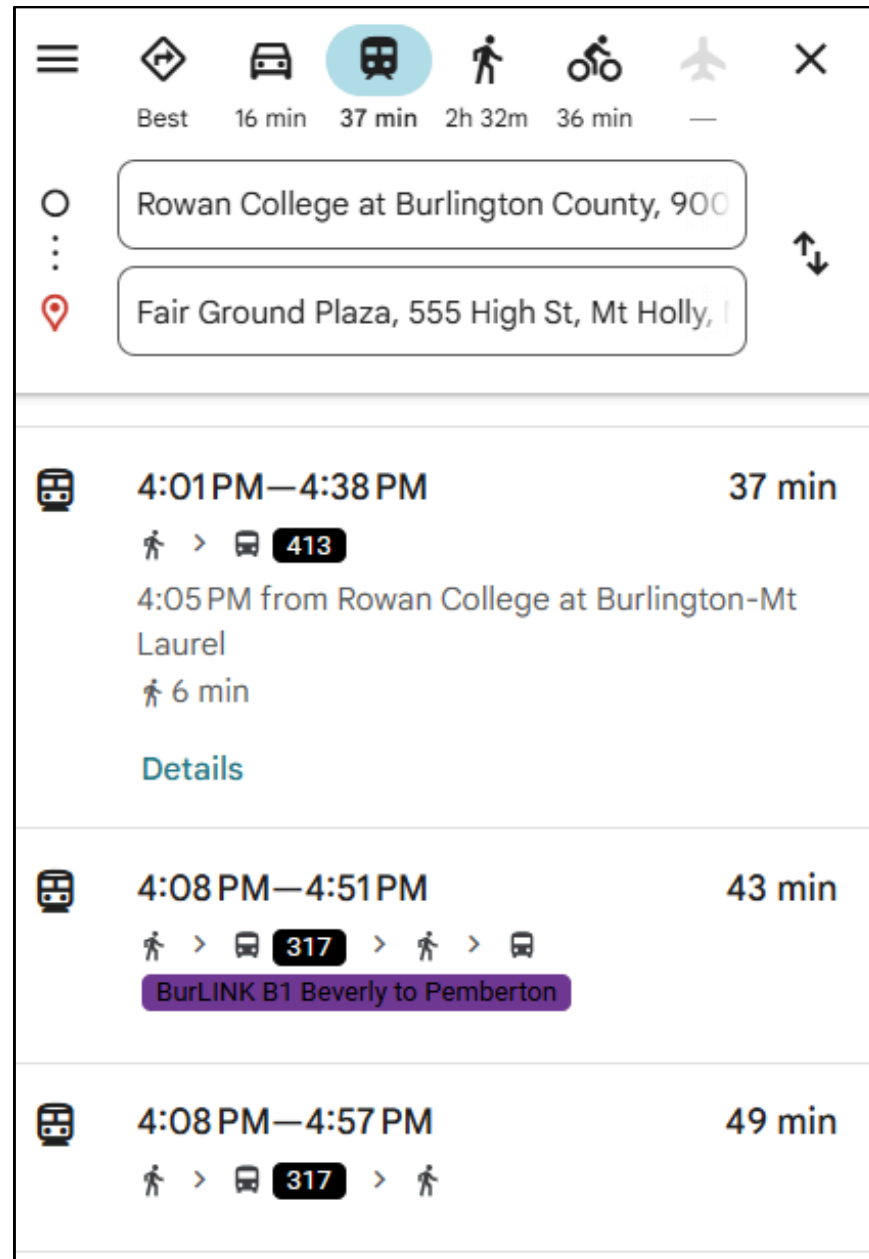


BurLINK service provided by
the Burlington County Board
of Commissioners

Customer Service
Stout's Transportation
856-461-1806



BUS & RAIL INFORMATION - Cross County Connection
856-596-8228



Best 16 min 37 min 2h 32m 36 min —

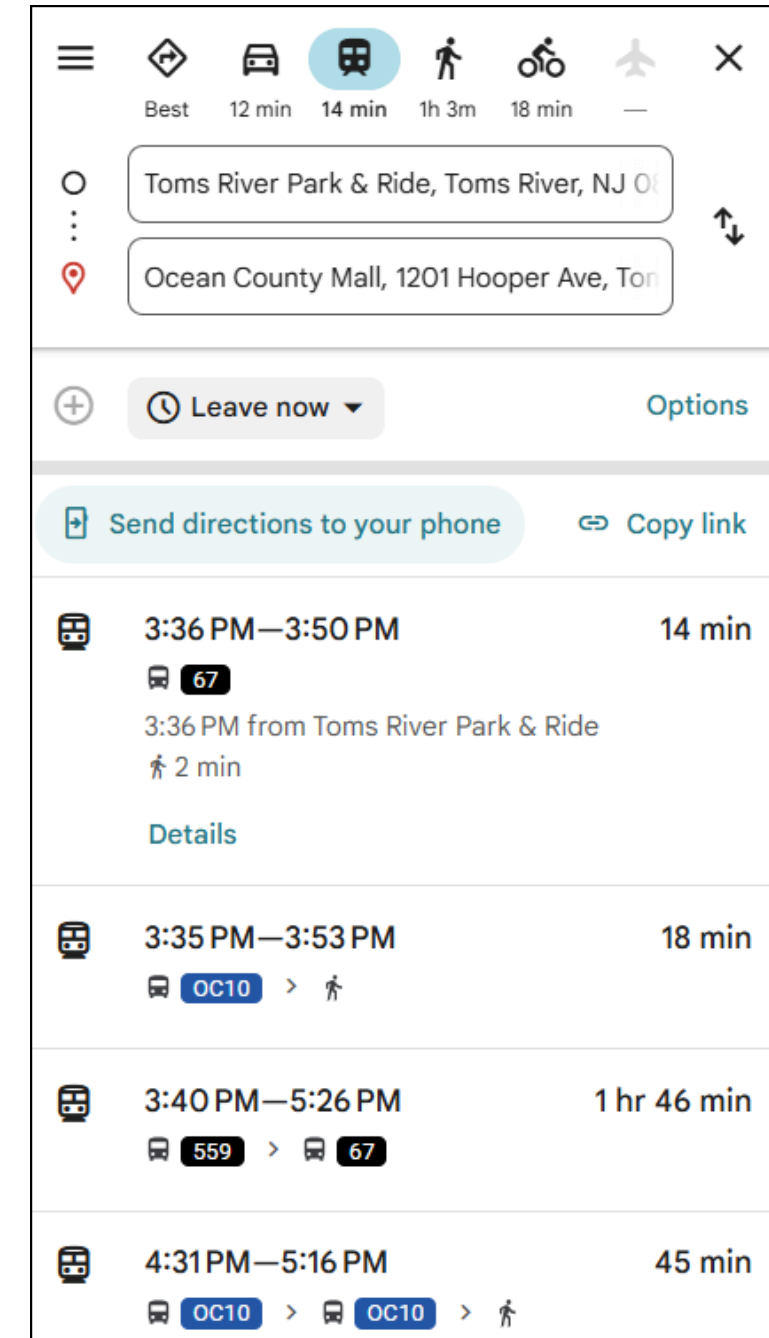
Rowan College at Burlington County, 900

Fair Ground Plaza, 555 High St, Mt Holly, NJ

4:01 PM—4:38 PM 37 min
4:05 PM from Rowan College at Burlington-Mt Laurel
6 min
Details

4:08 PM—4:51 PM 43 min
BurLINK B1 Beverly to Pemberton

4:08 PM—4:57 PM 49 min



Best 12 min 14 min 1h 3m 18 min —

Toms River Park & Ride, Toms River, NJ 08053

Ocean County Mall, 1201 Hooper Ave, Toms River, NJ 08053

Leave now Options

Send directions to your phone Copy link

3:36 PM—3:50 PM 14 min
67
3:36 PM from Toms River Park & Ride
2 min
Details

3:35 PM—3:53 PM 18 min
OC10

3:40 PM—5:26 PM 1 hr 46 min
559 67

4:31 PM—5:16 PM 45 min
OC10 OC10

Ocean Ride

OC 10

TOMS RIVER CONNECTION

Service Days:
6 Days a Week in
Fall & Winter, Mon. - Fri.

Communities Served:
Lavallette
Seaside Heights
Toms River -
Government Complexes
Toms River Park & Ride
Ocean County Mall

The Ocean Ride OC 10 is a bus service that is open and available for people of all ages.

For information: (732) 736-8989
www.co.ocean.nj.us/OC/Transportation

FALL/WINTER 2025/2026

