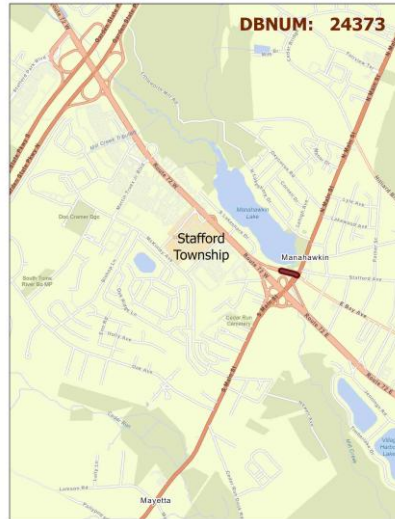


# NJTPA TIP FY 2026 - 2029

## Bay Avenue, Bridge over Mill Creek

**DBNUM:** 24373      **AQ Code:** S19 (Exempt)      **Est. Total Project Cost:** \$13.400 (Million)      **Sponsor:** NJDOT  
**Routes:**                      **Mileposts:**                      **RCIS:** Bridge Preservation  
**County:** Ocean                      **Municipality:** Stafford Twp

Initiated from the Bridge Management System, this project will replace the structurally deficient bridge built in 1929.



MPO	PHASE	FUND	Constrained TIP				Total	Unconstrained
			2026	2027	2028	2029		2030-2035
NJTPA	PE	STBGP-OS-BRDG		1.000			1.000	
NJTPA	DES	STBGP-OS-BRDG				2.000	2.000	
NJTPA	ROW	STBGP-OS-BRDG				0.300	0.300	
NJTPA	CON	STBGP-OS-BRDG						10.100
<b>TOTAL (\$ million)</b>				1.000		2.300	3.300	10.100

# NJTPA TIP FY 2026 - 2029

## Chadwick Beach Island Bridge (No. 1507-007) over Barnegat Bay

**DBNUM:** N1805      **AQ Code:** S19 (Exempt)      **Est. Total Project Cost:** \$12.466 (Million)      **Sponsor:** Ocean County  
**Routes:**      **Mileposts:**      **RCIS:** Bridge Preservation  
**County:** Ocean      **Municipality:** Toms River Twp

The purpose of the Chadwick Island Bridge project is to restore the structural, geometric and operational integrity of the bridge in compliance with current design standards and to provide a safe, efficient and reliable crossing for all modes of transportation. The existing structurally deficient all timber bridge was originally constructed in the early 1950's as part of the original development of the island community. In 1985 the bridge superstructure was replaced to prolong its service life. The current issues with the existing timber bridge include, moderate to severe deterioration /section loss of load bearing piles, deterioration of substructure cross bracing, deterioration and misalignment of timber deck boards and hardware and inadequate roadway width for vehicular traffic. This is a bridge replacement project.



MPO	PHASE	FUND	Constrained TIP				Total	Unconstrained
			2026	2027	2028	2029		2030-2035
NJTPA	ROW	STBGP-NY/NWK		0.400			<b>0.400</b>	
NJTPA	CON	STBGP-NY/NWK				10.000	<b>10.000</b>	
<b>TOTAL (\$ million)</b>				0.400		10.000	<b>10.400</b>	

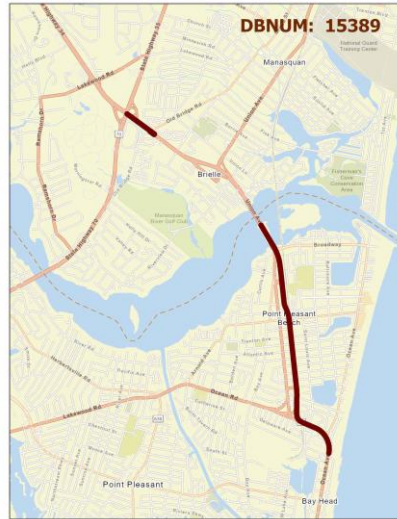


# NJTPA TIP FY 2026 - 2029

## Route 35, Osborne Avenue to Manasquan River & Old Bridge Road to Route 34 & Route 70

**DBNUM:** 15389      **AQ Code:** S10 (Exempt)      **Est. Total Project Cost:** \$49.206 (Million)      **Sponsor:** NJDOT  
**Routes:** 35      **Mileposts:** 12.48-14.52, 15.73-16.10      **RCIS:** Road Preservation  
**County:** Ocean Monmouth      **Municipality:** Point Pleasant Beach Boro Brielle Boro Wall Twp

Initiated from the Pavement Management System, this project will reconstruct the pavement and address drainage issues within the project limits. ADA improvements will be included.



			Constrained TIP				Unconstrained	
MPO	PHASE	FUND	2026	2027	2028	2029	Total	2030-2035
NJTPA	ROW	NHPP	2.200				2.200	
NJTPA	CON	NHPP		43.000			43.000	
<b>TOTAL (\$ million)</b>			2.200	43.000			45.200	

# NJTPA TIP FY 2026 - 2029

## Route 37 On Ramp to Route 35, Missing Move

**DBNUM:** 17403      **AQ Code:** NR3 (Exempt)      **Est. Total Project Cost:** \$12.825 (Million)      **Sponsor:** NJDOT  
**Routes:** 37 / 35      **Mileposts:** 13.13      **RCIS:** Road Enhancement  
**County:** Ocean      **Municipality:** Seaside Heights Boro Berkeley Twp

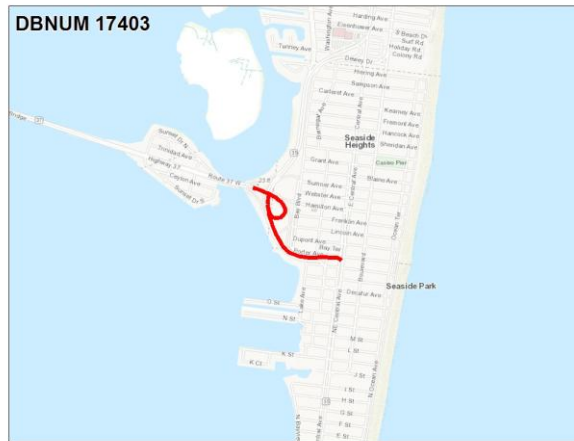
This project will be at the entrance to Route 35 Seaside Park from Route 37.

The Route 35/Route 37 interchange is the major southern entrance to the Barnegat Bay barrier island. Vehicles entering the island and travelling south to Seaside Park, Berkeley Township and Island Beach State Park enter the island utilizing Route 37 eastbound to route 35 southbound. Currently this movement consists of making a tight double horizontal curve in the shape of an “S”.

The geometric concerns associated with the S-Curve were identified during the development of the original (Pre-Sandy) project. The preferred solution was to replace the S-Curve with a smooth single curve. The S-Curve wraps around three blocks of residential properties. The straightening of the S-Curve required taking three properties in full and one partially.

The ROW process was on-going when Super Storm Sandy struck in October 2012. An emergency situation was created and the Department moved quickly to reconstruct the battered Route 35 and its associated drainage system. It was decided to put off the smoothing of the S-Curve as the ROW process would take its due course.

The ROW has now been acquired and the Department can move forward to replace the S-Curve with a smooth single curve as originally envisioned.



MPO	PHASE	FUND	Constrained TIP				Total	Unconstrained
			2026	2027	2028	2029		2030-2035
NJTPA	PE	NHPP			1.875		1.875	
NJTPA	DES	NHPP						2.500
NJTPA	ROW	NHPP						0.950
NJTPA	CON	NHPP						7.500
<b>TOTAL (\$ million)</b>					1.875		1.875	10.950

# NJTPA TIP FY 2026 - 2029

## Route 88, Bridge over Beaver Dam Creek

**DBNUM:** 09322      **AQ Code:** S19 (Exempt)      **Est. Total Project Cost:** \$20.776 (Million)      **Sponsor:** NJDOT  
**Routes:** 88      **Mileposts:** 7.60      **RCIS:** Bridge Preservation  
**County:** Ocean      **Municipality:** Brick Twp Point Pleasant Boro

Initiated by the Bridge Management System, this project will replace the structurally deficient and functionally obsolete bridge, built in 1923.



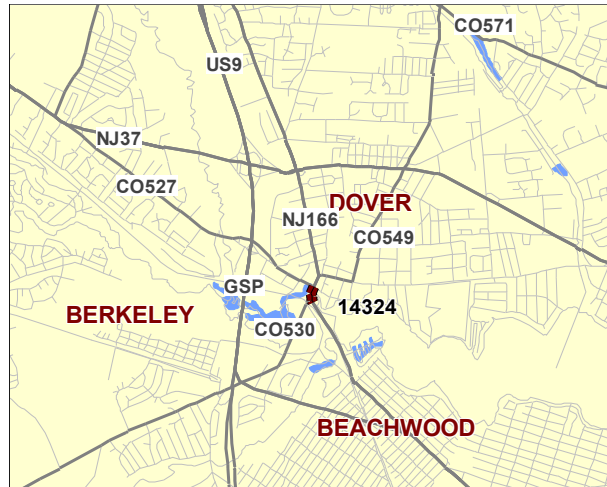
			Constrained TIP				Unconstrained	
MPO	PHASE	FUND	2026	2027	2028	2029	Total	2030-2035
NJTPA	ROW	BFP	1.300				1.300	
NJTPA	CON	NHPP		12.300			12.300	
<b>TOTAL (\$ million)</b>			1.300	12.300			13.600	

# NJTPA TIP FY 2026 - 2029

## Route 166, Bridges over Branch of Toms River

**DBNUM:** 14324      **AQ Code:** S19 (Exempt)      **Est. Total Project Cost:** \$41.600 (Million)      **Sponsor:** NJDOT  
**Routes:** 166      **Mileposts:** 0.90-1.15      **RCIS:** Bridge Preservation  
**County:** Ocean      **Municipality:** South Toms River Boro Toms River Twp

Initiated by the Bridge Management System, this project will replace the structurally deficient bridges, built in 1928. Addressing scour critical issues, and sidewalk and ADA improvements are included.



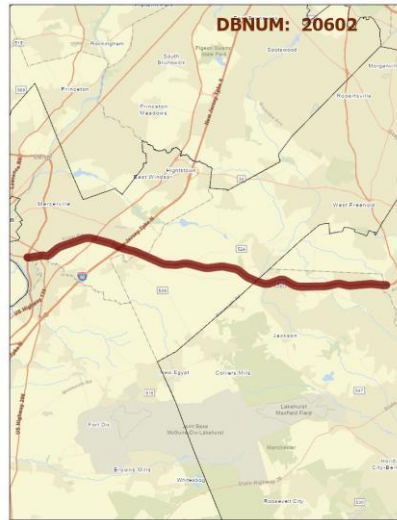
MPO	PHASE	FUND	Constrained TIP				Total	Unconstrained
			2026	2027	2028	2029		2030-2035
NJTPA	ROW	BFP	1.000				<b>1.000</b>	
NJTPA	CON	NHPP				40.600	<b>40.600</b>	
<b>TOTAL (\$ million)</b>			1.000			40.600	<b>41.600</b>	

# NJTPA TIP FY 2026 - 2029

## Route 195, Route 295 to Route 9

**DBNUM:** 20602      **AQ Code:** S6 (Exempt)      **Est. Total Project Cost:** \$30.305 (Million)      **Sponsor:** NJDOT  
**Routes:** 195      **Mileposts:** 0.00 - 25.90      **RCIS:** ITS and Incident Management  
**County:** Mercer Monmouth Ocean      **Municipality:** Various

Initiated by the Mobility Engineering unit, this project will implement Connected Corridor Strategies along the Route I-195 corridor. These various strategies include Roadside Units (RSU), Camera Surveillance System (CSS), Dynamic Message Signs (DMS) and fiber optics communications network.



			Constrained TIP				Unconstrained	
MPO	PHASE	FUND	2026	2027	2028	2029	Total	2030-2035
NJTPA	CON	NHPP		30.305			30.305	
<b>TOTAL (\$ million)</b>				30.305			30.305	

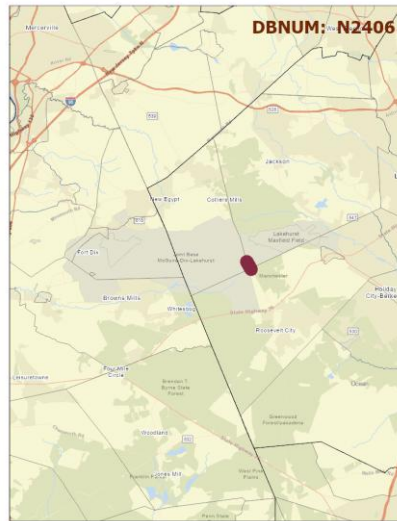
# NJTPA TIP FY 2026 - 2029

## Route 539 Overpass (joint Kim/Smith)

**DBNUM:** N2406      **AQ Code:** nr4 (Exempt)      **Est. Total Project Cost:** \$11.000 (Million)      **Sponsor:** NJTPA  
**Routes:**      **Mileposts:**      **RCIS:** Direct Safety  
**County:** Ocean      **Municipality:** Plumsted Twp Jackson Twp

This funding to be used to construct an overpass on County Route 539 which goes through the center of Joint Base McGuire-Dix Lakehurst. For the men and women who train on Joint Base MDL, it offers thousands of acres of added training space east of CR 539, with faster and safer routes for military personnel to travel. The CR-539 project will allow the Army to continue and expand its vital national security mission to train Army Reservist and Army National Guard Members during peacetime. Additionally, it will allow shore-bound motorists safer travel by keeping military vehicles and conveys off CR 539 and State Highway Route 70, which are currently their common routes to go from one end of the base to the other. Civilian traffic would ride above on the new overpass on CR 539, while large military tactical vehicles would be able to travel more safely and efficiently below.

This project has received:  
 \$11 million of FHWA FY23 Congressionally Directed Spending Program funds.



			Constrained TIP				Unconstrained	
MPO	PHASE	FUND	2026	2027	2028	2029	Total	2030-2035
NJTPA	CON	DEMO	11.000				11.000	
<b>TOTAL (\$ million)</b>			11.000				11.000	

# NJTPA TIP FY 2026 - 2029

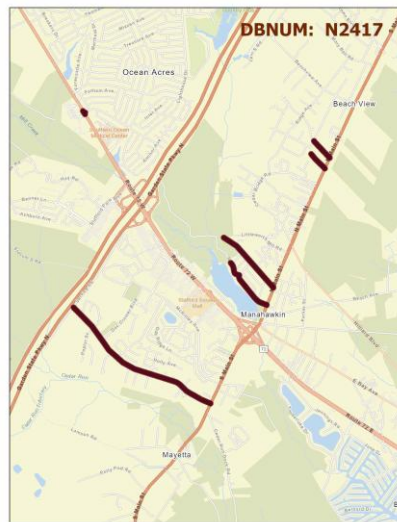
## Route 72 & Route 9 Safety Improvements

**DBNUM:** N2417      **AQ Code:** S3, S10, AQ2 (Exempt)      **Est. Total Project Cost:**        **Sponsor:** Township of Stafford  
**Routes:**                      **Mileposts:**                      **RCIS:** Direct Safety  
**County:** Ocean                      **Municipality:** Township of Stafford

The anticipated work includes the elimination of access to Route 72 at Barnacle Drive with an exit only from Route 72 Westbound onto Barnacle Drive. This will eliminate the occurrence of a left turn movement off of Route 72 Eastbound onto Barnacle Drive as well as turning movements from Barnacle Drive into Route 72.

The Route 9 corridor of Oak Ave, North Lakeshore Drive, Oxycocus Road, Silo Road and Sugar Hill Road is proposing milling 2" and overlay plus 1" of the roads, with no new drainage, minimal re-grading, and ADA sidewalks and ramps.

This project received a FY 2023 FHWA Community Project Funding/Congressionally Directed Spending grant award in the amount of \$2 million (NJ324).



			Constrained TIP				Unconstrained	
MPO	PHASE	FUND	2026	2027	2028	2029	Total	2030-2035
NJTPA	CON	DEMO	2.000				2.000	
NJTPA	CON	OTHER	0.022				0.022	
<b>TOTAL (\$ million)</b>			2.022				2.022	